

FOR SALE

INDUSTRIAL SITE

3289 ROUTE 446 :: ELDRED, PENNSYLVANIA



FEATURES:

- 296,000 SF Industrial Site
- Situated on 25.9 Acres
- Located in a PA State Designated Keystone Zone
- Incentives include a 10-year Real Property Tax Abatement
- On-Site Rail Service
- 23 Raised truck docks with new levelers
- 3 Phase Power
- 14' Ceilings
- Zoned Light Industrial

FOR MORE
INFORMATION
PLEASE
CONTACT

Sherry Bauer

Senior Associate
814.453.2000
sherry.bauer@cbre.com

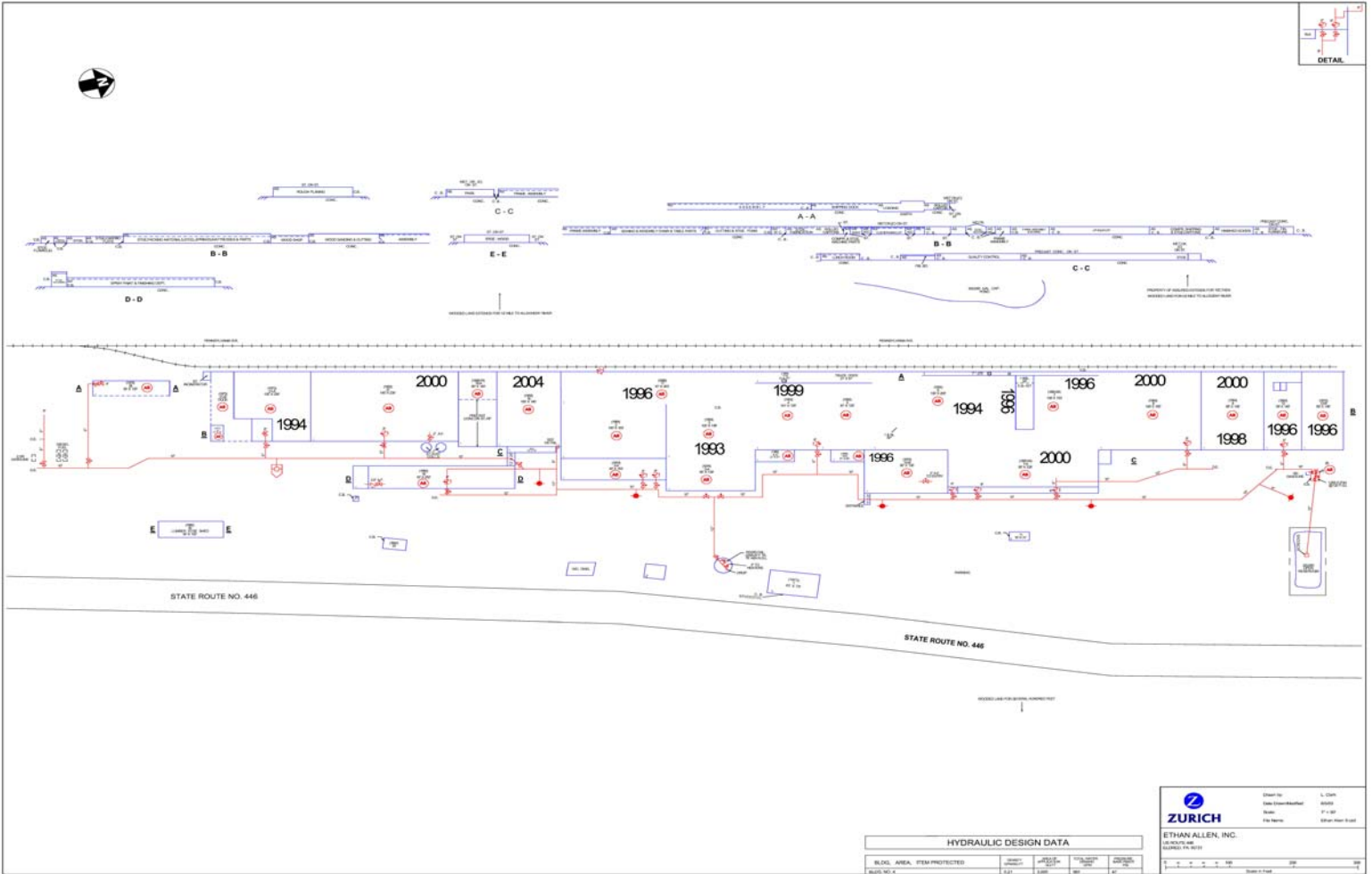
CBRE
CB RICHARD ELLIS

FOR SALE



INDUSTRIAL SITE

3289 ROUTE 446 :: ELDRED, PENNSYLVANIA



For additional information, please visit the website:

www.cbre.com/sherry.bauer

FOR MORE
INFORMATION
PLEASE
CONTACT

Sherry Bauer

Senior Associate

814.453.2000

sherry.bauer@cbre.com



CB Richard Ellis | Bayview Office Park | 410 Cranberry Street | Suite 220 | Erie, PA 16507

©2009 CB Richard Ellis, Inc. The information above has been obtained from sources believed reliable. While we do not doubt its accuracy, we have not verified it and make no guarantee, warranty or representation about it. It is your responsibility to independently confirm its accuracy and completeness.

www.cbre.com/sherry.bauer